

Haseltine Newsletter: Friday 6<sup>th</sup> December



Dear Families and Friends,

Welcome to the penultimate newsletter of 2024! I can honestly say that I do not know where this year has gone, and I REALLY cannot believe that we have only two weeks of this term left; we are nearly a third of the way through the school year! We have had the Autumn Term and when we come back in January, it will be the Spring Term. I will add the dates to the end of this newsletter.

All of our Christmas events are really picking up now, which is very exciting! Please check the rest of this newsletter for the details.



### **Christmas Fair:**

We have our fair today – straight after school until 6.30pm. Please pop along if you can, there will be lots of really exciting things to do and to eat & drink. All money raised will go straight to projects for the school. Not only that, you'll also be able to join the Haseltine community in a lovely big celebration 😊

Thank you so much to all of you who have donated – for all the chocolate and for all the items. Thank you especially to all of you who have donated your time in the build-up to the fair, on the actual event and/or for clearing up at the end. We really are very grateful indeed.

**Please remember that when you are at the fair with your children, that you are responsible for the safety of your children. Please keep them close to you, please also remember that children younger than 7 are not allowed on the gym equipment outside, and no one is allowed around the back of the school on the climbing equipment. Thank you 😊**

### **The Shows:**

- EYFS Christmas performance: Thursday 12<sup>th</sup> December at 2pm
- EYFS Christmas performance: Friday 13<sup>th</sup> December at 10am
- KS1 Christmas performance: Tuesday 17<sup>th</sup> December at 2pm

Haseltine Newsletter: Friday 6<sup>th</sup> December



- KS1 Christmas performance: Wednesday 18<sup>th</sup> December at 9.30am
- KS2 Winter Songfest: Wednesday 18<sup>th</sup> December after school, details to follow



Please make sure that you have booked your tickets for the EYFS & KS1 shows. Remember also, please only come to one of the shows in each phase group. If you come to both, it may stop another parent from being able to come & see their child.

You do not need to book for KS2 as this will be in the playground.

**Please can we ask that you come to the show for the start time.** We cannot wait for you, and it is really sad for your child when you miss their part, it also interrupts the flow of the show. Many thanks.

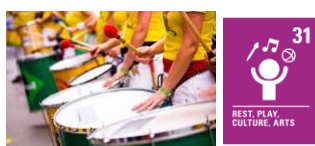
### **An apology:**

I do want to make an apology for the way I said something in my email to you about the shows. It may have looked as if I was if I was dismissing the Christian side of Christmas when I spoke about the shows being as non-religious as possible. In trying to be as inclusive as possible to all, it actually inferred that I was excluding those of Christian faith. I really do apologise as that was never my intention and I am sorry for the upset caused.

Thank you to the parent who brought this to my attention.

### **SAMBA PERFORMANCE**

On Monday 9<sup>th</sup> December, 4B and a few of our year six musicians will be performing straight after school in the playground.



Haseltine Newsletter: Friday 6<sup>th</sup> December



**Other Christmas Events:**

Don't forget that the **Children's Christmas Dinner** has now moved to Thursday 12<sup>th</sup> December. Please see the letter attached to this email for more details & to book, if your child does not normally have a school dinner.

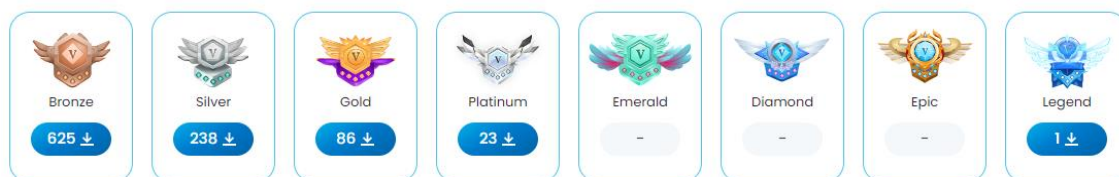
This is the same day as...

**Christmas Jumper Day...**

Please wear your festive/wintery/sparkly/colourful jumpers on Thursday 12<sup>th</sup>. We will be raising money for Save the Children, so we will be collecting donations of £1 or more for this amazing charity. (Own clothes can be worn too.)

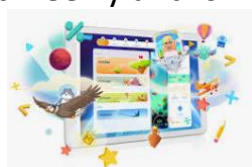


Certificates



A huge well done to our Haseltine Mathletes. **973 certificates** have been achieved this academic year so far – celebrating **effort** and **participation**.

Mathletics home learning is set weekly and is linked to the learning set in class.





### **Music lessons:**

There are still some outstanding payments for the Autumn Term music lessons. As you are aware, all lessons are payable in advance at the start of the term. Although information this term was added slightly later, payments were still due.

If you are having problems using the Arbor app to make payment please come and see any of the office staff who can assist you. Alternatively, please bring the exact amount in cash to the office.

Please note, if the fees due have not paid when we start the Spring Term in January your child will be unable to continue with their lessons. To continue lessons payment will need to be made for the outstanding term with the new term payment being made when we return in January. Please contact the office once these have been paid.



### **Lunches & trips:**

Please remember your child is only entitled to a school packed lunch if you have been awarded means tested Free School Meals by the local authority. If this is not the case please ensure your child has a packed lunch with them for the trips. As a result of Natasha's Law all our packed lunches are prepared in line with the personal allergy and diet information for each child. Therefore, we are unable to supply an ad hoc packed lunch on the day of the trip for any children.

### **School uniform:**

Thank you to those of you using the Arbor app to purchase their uniform items. For those parents who have still not downloaded the Arbor app, please do your best to sign on and set this up. This will allow you to order and pay for the uniform, you can then just pop by the office and collect them. We do not generally take cash for any items, and do not keep any cash in the office to give for change. If you need to buy your items at the office please can you ensure you have the exact amount required.

### **Calling at the office:**

Haseltine Newsletter: Friday 6<sup>th</sup> December



When coming to the office at the end of the day, please do not ring to come in whilst the children are coming down to line up to go home. We are unable to allow anyone into the playground at that time. You are welcome to come to the office once the gates open, we can then deal with your enquiry.



### **Exciting News:**

Our year 3 children were asked to complete some art pieces based on the theme of Winter, by Lower Sydenham train station. These pieces can now be seen on display at the station, so if you are nearby do pop in to have a look. Well done to the artists in year 3 😊

### **Save the Date:**

Haseltine's Annual Careers Fair will take place in the morning of Friday 28<sup>th</sup> March. Please book this date in your diary, if you would like to come in and talk to our children about your job/career. Thank you 😊

### **Pick up from After School Club:**

Please can we remind you that the pick-up point from ASC should be from the **back of the restaurant**, and not from the door to the main office. Please wait just inside the door for the adults to bring the children to you. For the safeguarding of all children, please do not enter further into the ASC rooms.

Many thanks.

### **Children return to school...**

...on Tuesday 7<sup>th</sup> January 2025.

**Have a lovely weekend everyone – enjoy the Fair later today!**